


Product information

RKC 30 - RKC 50 - RKC 50/11

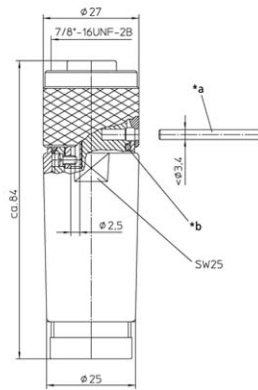
Industrial Connecting Solutions: Circular Connectors: 7/8", M23 Connectors: 7/8" Connectors: Field Attachable 7/8" Connectors: Female Connectors: RKC 30 - RKC 50

https://e-catalog.beldensolutions.com:443/link/57078-24228-256281-256289-256290-276563-276566-248843/en/RKC_05-11/ui/state

| | |
|---|--|
| Name | RKC 30 - RKC 50 |
| |  |
| | Field attachable connector, 7/8" female connector, straight version, with threaded joint, assembling with screw terminals, 5 poles, screwed cable gland with PG 11 thread. |
| Delivery informations | |
| Availability | available |
| Product description | |
| Type | RKC 50/11 |
| Order No. | 11222 |
| Description | Field attachable connector, 7/8" female connector, straight version, with threaded joint, assembling with screw terminals, 5 poles, screwed cable gland with PG 11 thread. |
| Number of contacts | 5 |
| Color of housing | black |
| Product characteristics | Oil resistance |
| Mechanical data | |
| Type of plug-in contact | Female connector |
| Design of housing | straight |
| Thread | 7/8" |
| Design of electrical connection | screw connection |
| LED display present | ✘ |
| Screw joint for cable for external cable diameter | 8.0 mm ... 10.0 mm |
| Screwed cable gland, connecting thread | Pg11 |
| Environmental conditions | |
| Environmental temperature | -40 °C ... 90 °C |
| Degree of protection (IP), mounted | IP67 |
| Pollution degree | 3 |
| Materials | |
| Housing material / Molded body | PA |
| Contact bearer material | TPU, self-extinguishing |
| Contact material | CuZn |
| Contact material - Surface refinement | silver-plated and gold-plated |
| Knurled screw / nut material | Al anodized |
| Sealing material | NBR |
| Electrical data | |
| Contact resistance | ≤ 5 mΩ |
| Rated current In | 9 A at 40°C, UL and notice derating |
| Nominal voltage | 240 V |
| Rated voltage | 250 V |
| Test voltage | 1.5 kV eff./60 s |
| Insulation resistance | > 1 GΩ |
| Approvals | |
| Approvals | UL |
| RoHS 2002/95/EG compliant | RoHS 2002/95/EG |

Industrial Connecting Solutions: Circular Connectors: 7/8", M23 Connectors: 7/8" Connectors: Field Attachable 7/8" Connectors: Female Connectors: RKC 30 - RKC 50
https://e-catalog.beldensolutions.com:443/link/57078-24228-256281-256289-256290-276563-276566-248843/en/RKC_05-11/uistate

Picture
 Drawing



- *a Stift oder Schraubendreher als Montagehilfe
pin or screwdriver as assembly tool
- *b O-Ring
O-ring

Belden Deutschland GmbH
 Im Gewerbepark 2
 58579 Schalksmühle
 Germany
 Phone: +49 7127/14-1806
 E-Mail: icos-sales@belden.com

The information published in the websites has been compiled as carefully as possible. It is subject to alteration without notice in technical as well as in price-related/commercial respect. The complete information and data were available on user documentation. Mandatory information can only be obtained by a concrete query.