

Racores (para ventosas de la serie V)

Elegir el nipple de acuerdo con la ventosa (tipo P o tipo G) y según la rosca requerida por el soporte.

Nipples (for vacuum cups series V)

Select the proper nipple according to the vacuum cup (P type or G type) and according to the thread of the cup support.



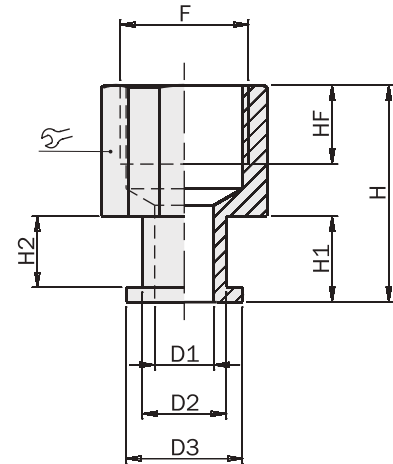
| AV | P/G | F | M | ∅[mm] | m [g] |
|-----------|-----|-------|-------|-------|-------|
| AV01M5F08 | P | M5 | - | 8 | 1.2 |
| AV01M5M08 | P | - | M5 | 8 | 0.8 |
| AV0118F13 | P | G1/8" | - | 13 | 4 |
| AV0118M13 | P | - | G1/8" | 13 | 4 |
| AV0118F12 | G | G1/8" | - | 12 | 3 |
| AV0118M12 | G | - | G1/8" | 12 | 2.6 |
| AV0118F16 | G | G1/8" | - | 16 | 6.2 |
| AV0118M16 | G | - | G1/8" | 16 | 4 |
| AV0114F16 | G | G1/4" | - | 16 | 4.6 |
| AV0114M16 | G | - | G1/4" | 16 | 5.4 |



Dimensiones (mm)

Dimensions (mm)

| | AV01M5F08 | AV0118F12 | AV0118F13 | AV0118F16 | AV0114F16 |
|----|-----------|-----------|-----------|-----------|-----------|
| F | M5 | G1/8" | G1/8" | G1/8" | G1/4" |
| D1 | ∅2.5 | ∅6 | ∅2.5 | ∅6 | ∅6 |
| D2 | ∅4 | ∅8.5 | ∅4 | ∅8.5 | ∅8.5 |
| D3 | ∅6 | ∅11.8 | ∅6 | ∅11.8 | ∅11.8 |
| H | 17 | 22 | 21 | 22 | 22 |
| H1 | 7.7 | 8.7 | 7.7 | 8.7 | 8.7 |
| H2 | 6.7 | 7.2 | 6.7 | 7.2 | 7.2 |
| HF | 5 | 7 | 7 | 8 | 8 |
| ∅ | 8 | 12 | 13 | 16 | 16 |



FIRST ANGLE PROJECTION

| | AV01M5M08 | AV0118M12 | AV0118M13 | AV0118M16 | AV0114M16 |
|----|-----------|-----------|-----------|-----------|-----------|
| M | M5 | G1/8" | G1/8" | G1/8" | G1/4" |
| D1 | ∅2.5 | ∅6 | ∅2.5 | ∅6 | ∅6 |
| D2 | ∅4 | ∅8.5 | ∅4 | ∅8.5 | ∅8.5 |
| D3 | ∅6 | ∅11.8 | ∅6 | ∅11.8 | ∅11.8 |
| H | 17 | 22 | 21 | 22 | 22 |
| H1 | 7.7 | 8.7 | 7.7 | 8.7 | 8.7 |
| H2 | 6.7 | 7.2 | 6.7 | 7.2 | 7.2 |
| HM | 4 | 6.5 | 6.5 | 6.5 | 6.5 |
| ∅ | 8 | 12 | 13 | 16 | 16 |

