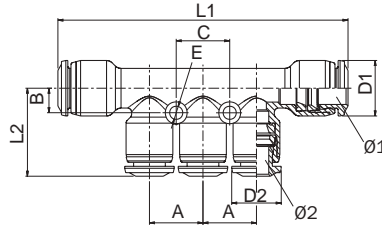


Racordaje
Fittings

Racor multi-T
Reduction manifold

	Ø1-Ø2	A	B	L1	L2	C	D1	D2	E	n°	m
RG.5535000001	6-4	13.5	6	74	21.8	13.5	14	12	3.3	10	173
RG.5535000003	8-6	13.5	6	73	22.3	13.5	14	12.5	3.3	10	161

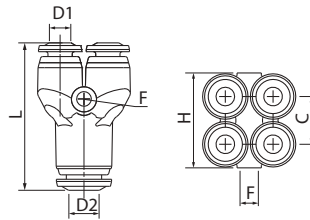


Características técnicas
Technical characteristics

T= -20° ÷ +80°C
P= -0.99 ÷ +15bar

Racor múltiple en Y intermedio con fijación M3
Intermediate Y-connector with M3 connection

	D1	D2	C	L	F	H	n°	m
RG.5533000001	4	4	10.8	33.5	3.3	21.5	10	122
RG.5533000002	4	6	10.8	34.5	3.3	21.5	10	111
RG.5533000003	6	6	13.3	39.5	3.3	26.8	10	177

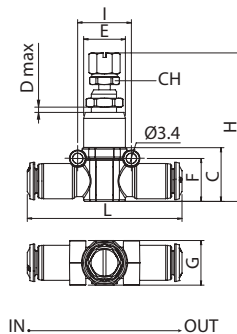


Características técnicas
Technical characteristics

T= -20° ÷ +80°C
P= -0.99 ÷ +15bar

Regulador de presión en línea tubo-tubo
Pipe-pipe inline pressure regulator

	Ø	C	D	E	F	G	H	I	L	CH	n°	m
RG.5597000002	6	18	5	14	14.5	15	48÷56.5	18	52	11	1	59
RG.5597000003	8	20	5	17	16.5	17	55÷65	20	58	13	1	53



Características técnicas
Technical characteristics

T= -20° ÷ +80°C
P= 1 ÷ 10bar

Ø [Diámetro exterior tubo (mm)]
n° [Cantidad de piezas por lote]
m [Peso de un lote de 10 piezas (g)]
P [Presión de utilización]
T [Temperatura de utilización]
dB [Nivel sonoro dB a 6 bar]
S [Umbral de filtración]

Ø [Hose outer diameter (mm)]
n° [Number of pieces in the pack]
m [Weight of a 10-piece pack (g)]
P [Operating pressure range]
T [Operating temperature range]
dB [Noise level in dB at 6 bar]
S [Filtration threshold]